



SAMPSON COUNTY 911 & ES FACILITIES

CLINTON,
NORTH CAROLINA

CONSTRUCTION
DOCUMENTS

AREA 1 POWER PLAN

DATE	12.04.2020	
PROJECT NO	20003	
REVISIONS		
NUM.	DATE	DESCRIPTION:

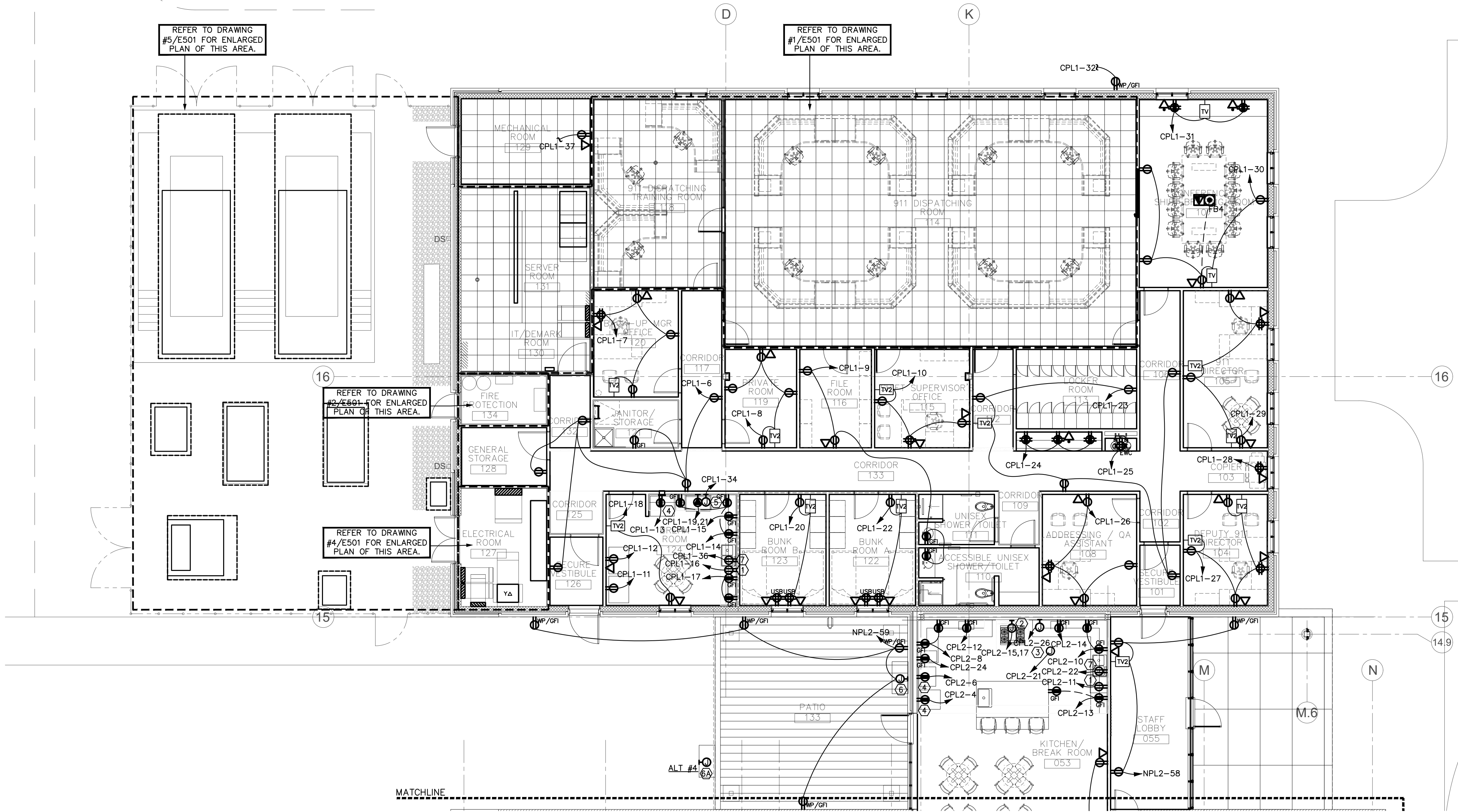
THIS DRAWING IS THE PROPERTY OF ADW ARCHITECTS, P.A., AND SHALL NOT BE REPRODUCED OR COPIED IN WHOLE OR IN PART. IT SHALL NOT BE USED ON ANY OTHER PROJECT OR GIVEN TO ANY OTHER COMPANY OR AGENCY WITHOUT THE CONSENT OF ADW ARCHITECTS, P.A.



SEAL

E201

SHEET NUMBER



1 AREA 1 FLOOR PLAN - POWER 1/8" = 1'-0"

GENERAL NOTES (APPLY TO THIS SHEET ONLY)

- MC CABLE SHALL NOT BE USED.
- CONTRACTOR SHALL COORDINATE ALL FLOOR BOX LOCATIONS AND REQUIREMENTS WITH FURNITURE VENDORS PRIOR TO ROUGH-IN.
- CONTRACTOR SHALL COORDINATE ALL TV LOCATIONS, MOUNTING HEIGHTS, AND REQUIREMENTS WITH OWNER PRIOR TO ROUGH-IN.
- ALL PENETRATIONS THROUGH CONSTRUCTION BOUNDARIES OF ROOMS PROTECTED BY CLEAN AGENT FIRE SUPPRESSION SYSTEMS SHALL BE SEALED GAS-TIGHT BY THE CONTRACTOR RESPONSIBLE FOR THE PENETRATIONS PRIOR TO FIRE SUPPRESSION SYSTEM ACCEPTANCE TEST. COORDINATE WITH ALL AFFECTED TRADES. IF THE SYSTEM DOES NOT PASS THE TEST, RESEAL PENETRATIONS AND RETEST UNTIL SYSTEM PASSES. CONTRACTOR(S) RESPONSIBLE FOR LEAKING PENETRATION(S) SHALL BEAR ANY COSTS ASSOCIATED WITH RETESTING THE FIRE SUPPRESSION SYSTEM.

KEYED NOTES (APPLY TO THIS SHEET ONLY)

- PROVIDE RECEPTACLE FOR DISHWASHER. DESIGN BASED ON CORD AND PLUG. IF HARD WIRE CONNECTION IS REQUIRED, PROVIDE JUNCTION BOX AND MOTOR RATED SWITCH MOUNTED IN CABINET BELOW SINK TO SERVE AS DISCONNECTING MEANS. CONTRACTOR SHALL COORDINATE EXACT TERMINATION REQUIREMENTS PRIOR TO ROUGH-IN. BREAKER SHALL BE GFCI PROTECTED.
- PROVIDE JUNCTION BOX FOR STOVE CONNECTION. DESIGN BASED ON STOVE RANGE REQUIRING 30AMP BREAKER AND #10AWG HARD WIRE CONNECTION. CONTRACTOR SHALL COORDINATE EXACT BREAKER, WIRE AND TERMINATION REQUIREMENTS PRIOR TO ROUGH-IN.
- PROVIDE JUNCTION BOX FOR STOVE HOOD CONNECTION. DESIGN BASED ON HARD WIRED CONNECTION. CONTRACTOR SHALL COORDINATE STOVE HOOD TERMINATION REQUIREMENTS AND ANSUL FIRE SUPPRESSION REQUIREMENTS WITH MECHANICAL CONTRACTOR PRIOR TO ROUGH-IN.
- PROVIDE RECEPTACLES FOR CONNECTION TO FREEZER/REFRIGERATOR. BREAKER SHALL BE GFCI PROTECTED. COORDINATE MOUNTING REQUIREMENTS AND HEIGHTS WITH PLUMBING CONTRACTOR PRIOR TO ROUGH-IN.
- PROVIDE JUNCTION BOX FOR STOVE HOOD WITH FAN/LIGHT CONNECTION. DESIGN BASED ON HARD WIRED CONNECTION. CONTRACTOR SHALL COORDINATE STOVE HOOD TERMINATION REQUIREMENTS PRIOR TO ROUGH-IN. PROVIDE REMOTE SWITCH FOR ADA ACCESS.
- J-BOX FOR BASE BID GAS GRILL CONNECTION.
- LOCATION OF GAS GRILL CONNECTION IF **ALTERNATE #4** IS ACCEPTED.
- PROVIDE RECEPTACLE FOR DISPOSAL. DESIGN BASED ON CORD AND PLUG. IF HARD WIRE CONNECTION IS REQUIRED, PROVIDE JUNCTION BOX AND MOTOR RATED SWITCH MOUNTED IN CABINET BELOW SINK TO SERVE AS DISCONNECTING MEANS. CONTRACTOR SHALL COORDINATE EXACT TERMINATION REQUIREMENTS PRIOR TO ROUGH-IN. BREAKER SHALL BE GFCI PROTECTED.

911
BUILDING

MAIN
BUILDING

EMS WING

KEY PLAN

